

PB15 Series 2.54mm(.100") Wire to Board Connector

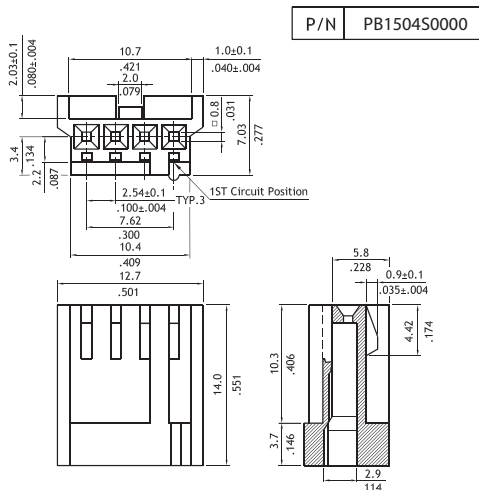
- Housing with locking ribs
- Header with locking wall
- Compatible with PB15 crimp clip terminal
- Terminal accommodates AWG #22 ~ #28

Construction

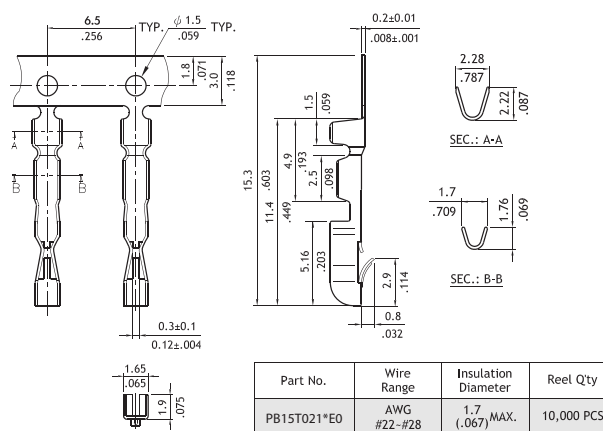
- Insulator: Nylon 66 UL 94V-0, Color Natural
- With Tin plated 0.64mm square pin
- Terminal: Tin plated Brass, Phosphor Bronze
- Engineering No's: CI35/2610 Series



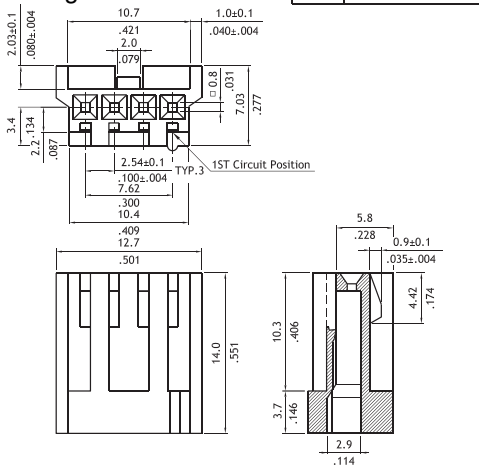
E159616



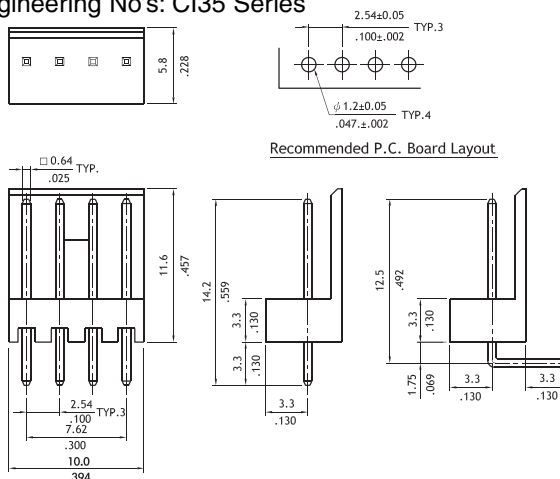
Engineering No's: CI35/2613 Series



Engineering No's: CI35 Series



Engineering No's: CI35 Series



Ordering Code

1 **2** **3** **4**
PB15 **04** **S** **0000**

- 1 Series No.
- 2 No. of Circuits: 04
- 3 S= Connector housing
- 4 Other options:
0000= Single Rib (Standard)
N000= Dual Ribs
* Special options Consult factory

1 **2** **3** **4** **5** **6**
PB15 **04** **P** **1** **V** **00**

- 1 Series No.
- 2 No. of Circuits: 04
- 3 P= Pin header
- 4 Plating : 1= Tin over Nickel plated
* Optional plating available but MOQ requested
- 5 Type: V= Straight
H= Right angle
- 6 Other options: 00= Standard
* Special options Consult factory