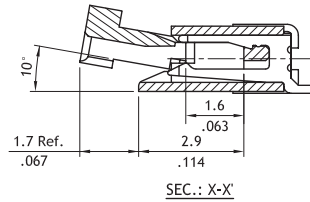
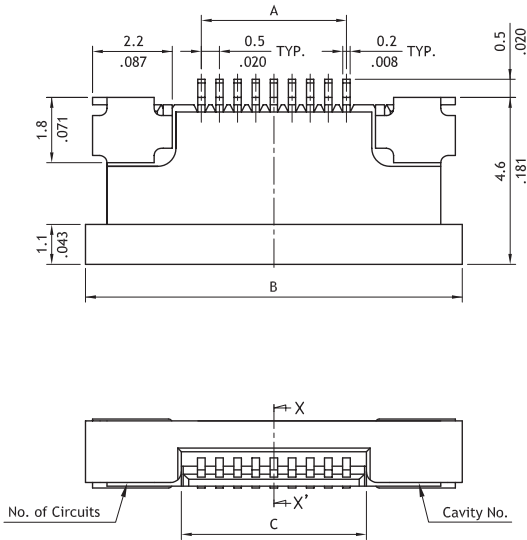
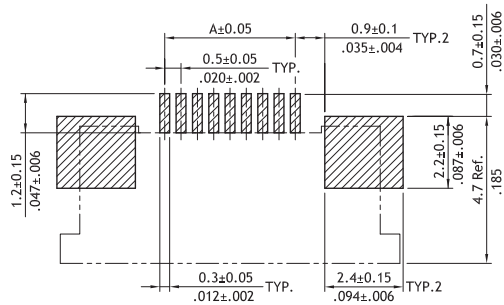
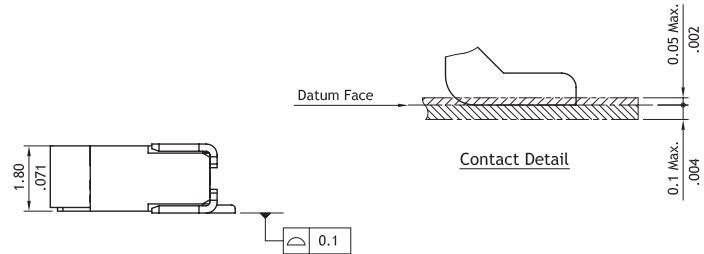


**PA01 Series 0.50mm(.020") SMT ZIF FFC/FPC Downside Connectors**

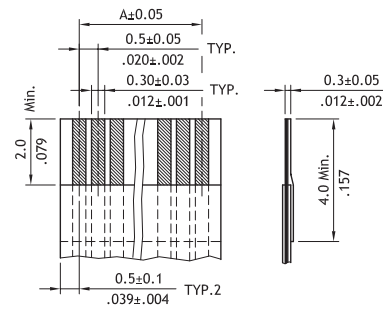
- ⊙ Tin plated Phosphor Bronze Downside contact
- ⊙ Insulation: High temperature plastic UL 94V-0, Color Natural
- ⊙ Slider: High temperature plastic UL 94V-0, Color Brown
- ⊙ Actuator designed for easy FFC/FPC installation
- ⊙ Fully checked by CCD and Hi-Pot test
- ⊙ With fixed metal tabs to secure connector in place
- ⊙ Available in Tube or Reel packing
- ⊙ Engineering No's: CF21 Series



A = 0.50 \* No. of Spaces  
 B = A + 6.4  
 C = A + 1.1  
 \* Available in 6 through 50 circuits



Solder Pad Pattern



Accommodated FFC/FPC

**Ordering Code**

**1 PA01 2 50 3 1 4 D 5 0 6 R0**

- ❶ Series No.
- ❷ Circuits : 06 to 50
- ❸ Plating code:  
1= Tin over Nickel

- ❹ Contact style:  
D= Downside contact
- ❺ Color: 0= Natural

- ❻ Other options:  
R0= Tape & Reel  
T0= Tube Packing  
\* Special options Consult factory