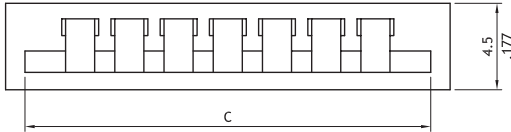
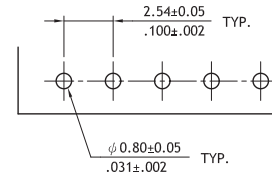
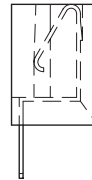
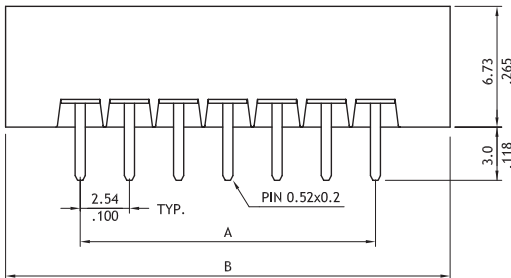


## PA09 Series 2.54mm(.100") DIP LIF FFC/FPC Connectors

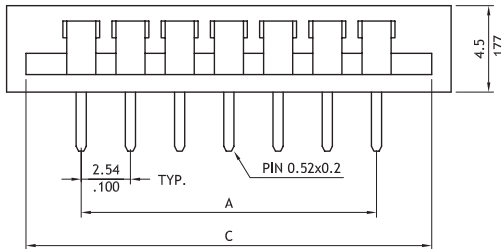
- ⊙ Standard with Tube packing
- ⊙ Tin plated contacts
- ⊙ Insulation: Glass filled polyester UL 94V-0, Color Black
- ⊙ Accommodates 0.3mm FFC/FPC thickness
- ⊙ Engineering No's: CF13/LCFC Series

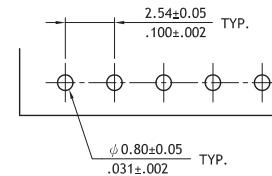
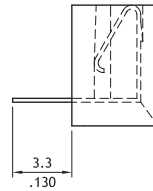
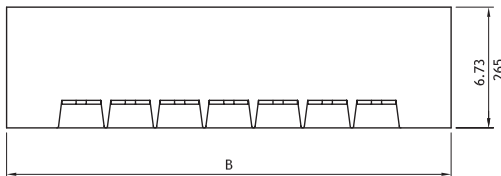
- $A = 2.54 * \text{No. of Spaces}$   
 $B = A + 7.62$   
 $C = A + 5.34$   
 \* Available in 4 through 20 circuits



Recommended P.C. Board Layout



- $A = 2.54 * \text{No. of Spaces}$   
 $B = A + 7.62$   
 $C = A + 5.34$   
 \* Available in 4 through 20 circuits



Recommended P.C. Board Layout

### Ordering Code

**1** PA09    **2** 20    **3** 1    **4** V    **5** 100

- 1** Series No.  
**2** Circuits : 04 to 20  
**3** Plating code:  
 1= Tin over Nickel

- 4** Entry options:  
 V= Top entry  
 H= Side entry

- 5** Other options:  
 100= Color Black (Standard)  
 \* Special options Consult factory