

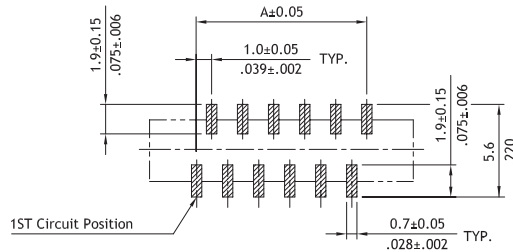
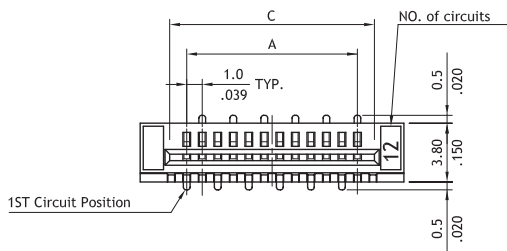
"Your Connection"

PA06 Series 1.00mm(.039") SMT LIF FFC/FPC Connectors

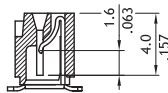
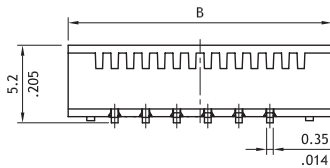
- ⊙ Standard with Tube packing
- ⊙ Tin plated contacts
- ⊙ Insulation: Glass filled Nylon 6T UL 94V-0, Color Natural
- ⊙ Accommodates 0.3mm FFC/FPC thickness
- ⊙ Engineering No's: CF16 Series



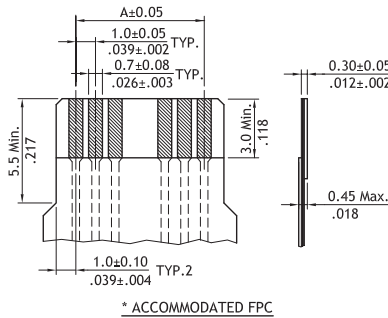
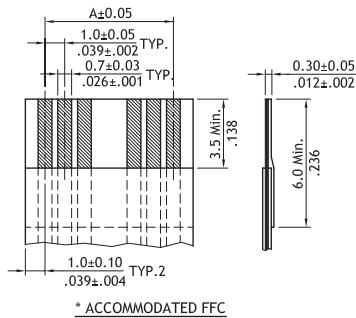
P/N PA06**1M0T0



Sold Pad Pattern



A = 1.00 x No. of Spaces
 B = A + 6.0
 C = A + 2.2
 * Available in 4 through 32 circuits



Ordering Code

1 PA06 2 12 3 1 4 V 5 0 6 T 7 0

- 1** Series No.
- 2** Circuits : 04 to 32
- 3** Plating code:
1= Tin over Nickel
- 4** Contact style:
V= Straight DIP type
M= SMT type
D= Downside contact
U= Upside contact
- 5** Color: 0= Natural
- 6** Packing options:
T= Tube Packing
- 7** Other options:
0= Standard
* Special options Consult factory