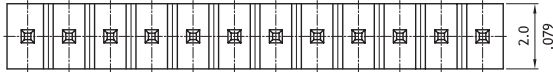


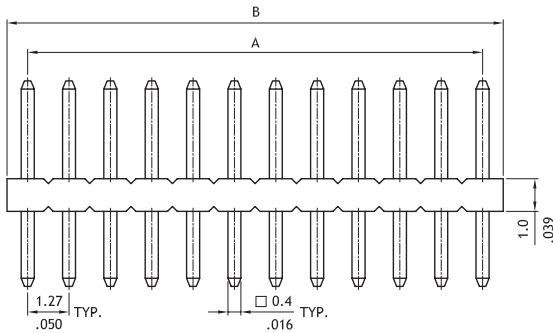
PG01 Series Single Row Board Mount Pin Header

1.27mm(.050") Center Spacing

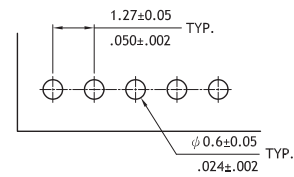
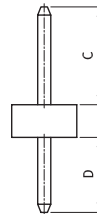
- ⊙ Mates with PF01 Series
- ⊙ Engineering No's: CH01 Series



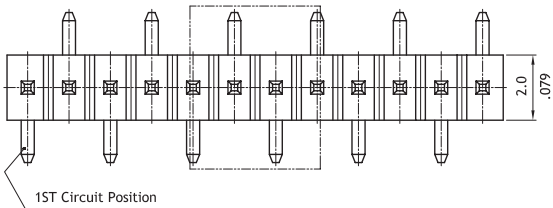
DIM. A = 1.27 X No. of Spaces
 DIM. B = DIM. A + 1.27
 * Available in 4 through 50 Circuits



Option Code	Pin Dimension	
	C	D
00	3.0(.118)	2.3(.091)

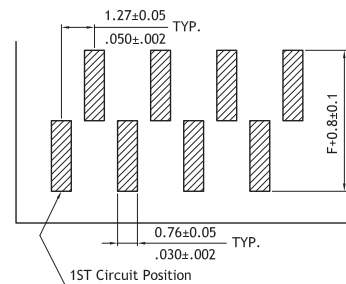
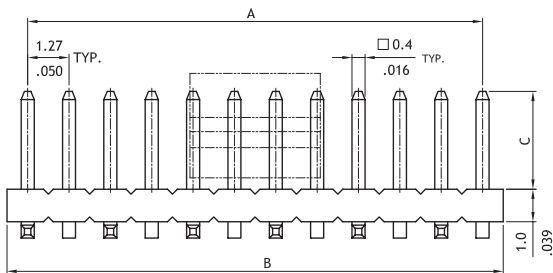


Recommended P.C. Board Layout



DIM. A = 1.27 X No. of Spaces
 DIM. B = DIM. A + 1.27
 * Available in 4 through 50 Circuits

Option Code	Pin Dimension		
	C	D	F
00	3.0(.118)	1.5(.059)	4.6(.181)



Recommend P.C. Board Layout

Ordering Code

1 PG01 **2** 50 **3** 2 **4** V **5** 1 **6** 00 - **7** 0 **8** 0

- 1** Series No.
- 2** Circuits: 04 to 50
- 3** Plating code:
2= Gold flash over Nickel plated
* Optional plating available but MOQ requested
- 4** Tail & Mounting Style:
V= Straight DIP type
M= Straight SMT type
- 5** Insulator Material & Color:
1= LCP, Color Black
- 6** Other options:
00= Standard
- 7** Pin Size:
0= Original design
- 8** 0= Without Pick & Place Pad (Tube packing)
P= With Pick & Place Pad (Tape & Reel)
* Number 7 and 8 only for SMT Type